

PRODUCT SPECIFICATION

SPEC. No.

T-0653-116



1. Scope

This specification applies High Current Power Inductors PHC4020-Series-TIY to be delivered to user.

2. Product Identification

PHC 0420 - R47□ - TIY

(1) (2) (3) (4) (5)

(1) Product name

(2) Shapes and dimensions

(3) Inductance

R47: 0.47 μ H

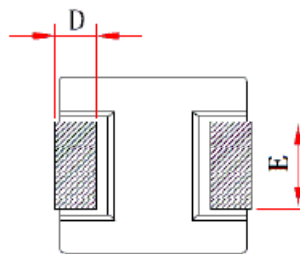
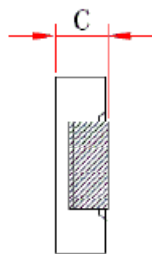
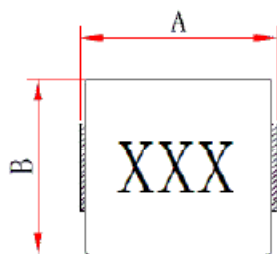
(4) Tolerance(%)

M: \pm 20%

(5) Taping Type

T: Taping, None: Bulk

3. Shapes and Dimensions [Dimensions in mm]



A: 4.70 Max. mm

B: 4.30 Max. mm

C: 2.0 Max. mm

D: 0.76 \pm 0.3 mm

E: 2.00 \pm 0.3 mm

3-1 Schematic

SCHEMATIC



Drawn by	Checked by	Approved by
<i>[Signature]</i> May 26, 2021	<i>[Signature]</i> May 26, 2021	<i>[Signature]</i> May 26, 2021

PRODUCT SPECIFICATION

SPEC. No.

T-0653-116



4. Electrical Characteristics

4-1 Electrical Spec.

Customer Part Number	EMTEK Part No.	Inductance (μ H)	Tol.	Test Freq.	Rdc ($m\Omega$)	Isat (A)	Irms (A)
					Max.	Typ.	Typ.
	PHC0420-R47□-TIY	0.47	M	100KHz/0.25V	14.0	12.0	8.0

1. All test data is referenced to 25°C ambient
2. Isat:DC current(A) that will cause L0 to drop approximately 30%
3. Irms:DC current (A) that will cause an approximate Δ T of 40°C